



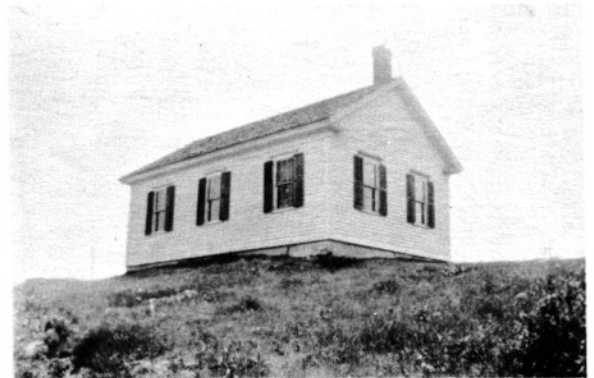
No. 6 — Former Munn District School, moved to East Hill Road and converted to home by Mr. and Mrs. Samuel Koran.



No. 9 — Moulton Hill School was located between Plumley and Blanchard Farms. Destroyed by fire.



No. 7 — Original appearance of Munn District School.



No. 12 — Gage District School was located at Stafford Road and Crow Hill Road. Also served later as home of Miss Bertha Goodspeed.



No. 8 — This building razed in 1917 was located on Rooster Hill, opposite present Buckwell Nursing Home.



No. 11 School was called Child's District School and was on Moulton Hill, near the present Lobik Farm. Closed in 1923.



No. 13 — Butler District School was situated on Butler Road and was dismantled in 1950.